

Crack Stitching a Cavity Wall using Thor Heliforce Bars

Method Statement

1. Use a twin bladed diamond tipped wall chasing unit to cut out horizontal slots in the mortar bed as the specification notes require. For clean dust free cutting use vacuum attachment to Chasing unit.

Note. When installing grouted bar in mortar bed joint, ensure the joint is removed in its entirety to the specified depth, so that the top and bottom faces of the brick are clearly visible within the slot. Failure to follow this procedure will result in reduced effectiveness of the repair.

2. Remove all dust and debris from the slot and seal all faces of the slot using Thor HR primer.

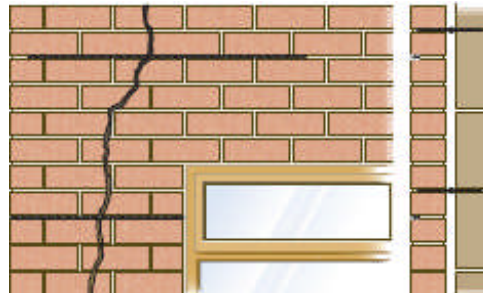
3. Cut the required number of Thor Heliforce bars to the appropriate length, ensuring that they fit into the prepared slots.

4. Mix the Thor Flexi Grout components together in the bucket provided, using a power mixing paddle, until both components are thoroughly blended. Additional fluids should not be added.

5. Load the Thor Flexi Grout into the Flexi Grout gun.

6. Inject a 10-15mm thick bead of grout into the back of the prepared slot. Insert the Thor Heliforce bar into the slot pushing the bar to the back of the slot to ensure displacement of the grout.

7. Install a further 10-15mm bead of Flexi Grout ensuring the bar is fully covered. Force the Flexi grout into the slot using a finger trowel, ensuring the Grout and bar composite is tightly packed into the joint.



8. The Grout should finish approximately 10mm from the surface of the brickwork, allowing for application of mortar pointing to finish the repair.

9. **Note.** Pointing can be commenced immediately grout has been trowelled.

Note. Thor Flexi Grout has an accelerated setting time, should the grout become too stiff to inject, empty the contents of the gun back into the mixing bucket. Re-agitate the mixture using the Paddle mixer, without adding additional fluid. Then reload the Injection gun and proceed as before.

Specification Notes

The following criteria are to be used unless specified otherwise:

- A. Finished depth of slot to be approximately 35-40mm deep.
- B. Finished thickness of slot to be no less than the thickness of the mortar bed
- C. Thor Heliforce bar should extend a minimum of 500mm either side of the crack.
- D. Maximum vertical spacing between bars should be 450mm unless otherwise stipulated
- E. Cracks in bricks to be made good with coloured sand and cement mortar. Where a crack is less than 500mm from the end of a wall or an opening the Thor Heliforce Bar is to be continued for at least 100mm around the corner and bonded into the adjoining wall or bent back and fixed into the reveal, avoiding any DPC membrane.
- F. In hot conditions ensure the masonry is well wetted or primed to prevent premature curing of the Thor Flexi Grout due to rapid de-watering. Ideally additional wetting of the slot, or priming with Thor Primer, should be carried out just prior to injecting the Thor Flexi Grout.
- G. Do not use Thor Flexi Grout when the air temperature is +4°C and falling. In all instances the slot must be thoroughly damp or primed prior to injection of the Thor Flexi Grout.

These notes are for general use only. Should these notes not apply to your specific project, please consult the Structured Designs Team who can adapt it as necessary. Structured Designs are able to offer a full project design service by our in house design team.

Crack Stitching a Solid Wall using Thor Heliforce Bar

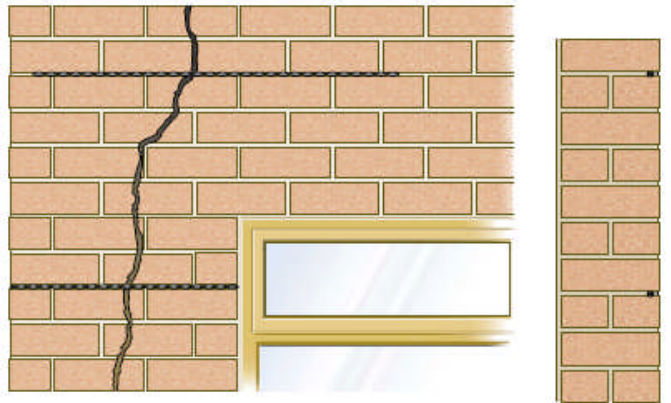
Method Statement

1. Use a twin bladed diamond tipped wall chasing unit to cut out horizontal slots in the mortar bed as the specification notes require. For clean dust free cutting use vacuum attachment to Chasing unit. **Note.** When installing grouted bar in mortar bed joint, ensure the joint is removed in its entirety to the specified depth, so that the top and bottom faces of the brick are clearly visible within the slot. Failure to follow this procedure will result in reduced effectiveness of the repair.
2. Remove all dust and debris from the slot and seal all faces of the slot using Thor HR primer.
3. Cut the required number of Thor Heliforce bars to the appropriate length, ensuring that they fit into the prepared slots.
4. Mix the Thor Flexi Grout components together in the bucket provided, using a power mixing paddle, until both components are thoroughly blended. Additional fluids should not be added.
5. Load the Thor Flexi Grout into the Flexi Grout gun.
6. Inject a 10-15mm thick bead of grout into the back of the Prepared slot. Insert the Thor Heliforce bar into the slot pushing the bar to the back of the slot to ensure displacement of the grout.
7. Install a further 10-15mm bead of Flexi Grout ensuring the bar is fully covered. Force the Flexi grout into the slot using a finger trowel, ensuring the Grout and bar composite is tightly packed into the joint.
8. The Grout should finish approximately 10mm from the surface of the brickwork, allowing for application of mortar pointing to finish the repair.

Method Continued

9. **Note.** Pointing can be commenced immediately grout has been trowelled.

Note. Thor Flexi Grout has an accelerated setting time, should the grout become too stiff to inject, empty the contents of the gun back into the mixing bucket. Re-agitate the mixture using the Paddle mixer, without adding additional fluid. Then reload the Injection gun and proceed as before.



Specification

- The following criteria are to be used unless specified otherwise:
- A. Finished depth of slot to be approximately 35-40mm deep.
 - B. Finished thickness of slot to be no less than the thickness of the mortar bed
 - C. Thor Heliforce bar should extend a minimum of 500mm either side of the crack.
 - D. Maximum vertical spacing between bars should be 450mm unless otherwise stipulated
 - E. Cracks in bricks to be made good with coloured sand and cement mortar. Where a crack is less than 500mm from the end of a wall or an opening the Thor Heliforce Bar is to be continued for at least 100mm around the corner and bonded into the adjoining wall or bent back and fixed into the reveal, avoiding any DPC membrane.
 - F. In hot conditions ensure the masonry is wall wetted or primed to prevent premature curing of the Thor Flexi Grout due to rapid de-watering. Ideally additional wetting of the slot, or priming with Thor HR Primer, should be carried out just prior to injecting the Thor Flexi Grout.
 - G. Do not use Thor Flexi Grout when the air temperature is +4°C and falling. In all instances the slot must be thoroughly damp or primed

These notes are for general use only. Should these notes not apply to your specific project, please consult the Structured Designs Team who can adapt it as necessary. Structured Designs are able to offer a full project design service by our in house design team.